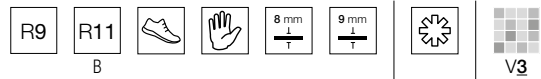


ZEELAND

Gres Porcellanato . Porcelain Stoneware
Grès Cérame . Feinsteinzeug

TECH INFO



SIZES

20x120
8"x48"



15,2x61,5
6"x24"



SURFACES

Naturale . Natural . Naturel . Natur

15,2x61,5 (White, Moka, Multi)
20x120 (White, Moka, Multi)

Sabbiato . Sandy . Antidérapant . Rau

20x120 (White, Moka, Multi)

WHITE

MOKA

MULTI



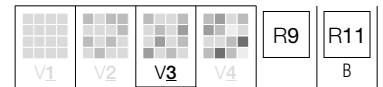


ZEELAND MOKA 20x120 • 8"x48" NAT.



ZEELAND MULTI 20x120 • 8"x48" NAT.

GRES PORCELLANATO . PORCELAIN STONEWARE . GRÈS CÉRAME . FEINSTEINZEUG
Naturale . Natural . Naturel . Natur • **Sabbiato** . Sandy . Antidérapant . Rau



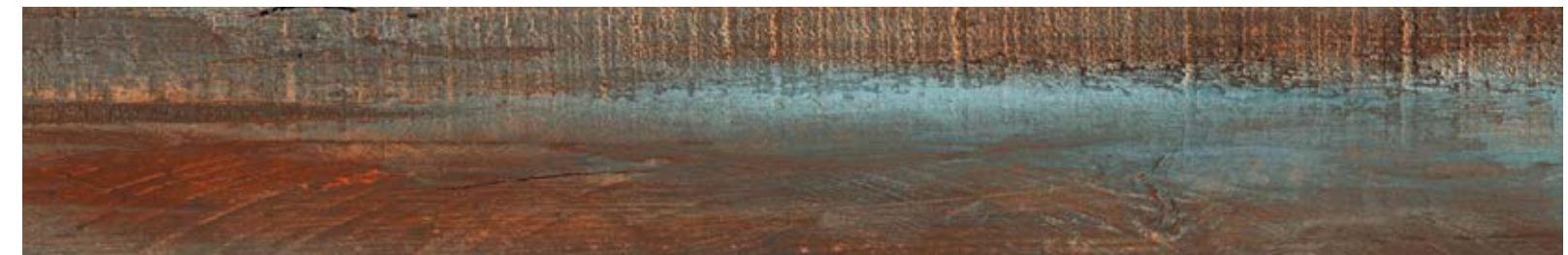
WHITE

15,2x61,5 . 6"x24"	NATURALE	23,15	R9	9 mm
20x120 . 8"x48"	NATURALE	30,86	R9	8 mm
20x120 . 8"x48"	SABBIATO	32,41	R11 B	8 mm



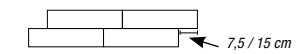
MOKA

15,2x61,5 . 6"x24"	NATURALE	23,15	R9	9 mm
20x120 . 8"x48"	NATURALE	30,86	R9	8 mm
20x120 . 8"x48"	SABBIATO	32,41	R11 B	8 mm



MULTI

15,2x61,5 . 6"x24"	NATURALE	23,15	R9	9 mm
20x120 . 8"x48"	NATURALE	30,86	R9	8 mm
20x120 . 8"x48"	SABBIATO	32,41	R11 B	8 mm



Nei formati rettangolari si consiglia la posa sfalsata irregolare del prodotto onde evitare problemi di planarità.
For the rectangular sizes is it advisable to stagger the product irregularly when laying it to avoid problems in flatness.
Pour les formats rectangulaire nous vous conseillons d'adopter la pose irrégulière à joints décalés pour le produit a fin d'éviter tout problème de planéité.
Für die Rechteckig Formate empfehlen wir die unregelmäßige versetzte Verlegung dieser Fliese, um Probleme mit der Ebenfächigkeit zu vermeiden.

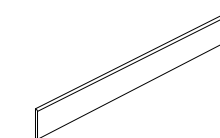
Decori - Decors - Decors - Dekore



MOSAICO 36 PZ (5x5)
30,2x30,2 . 12"x12"

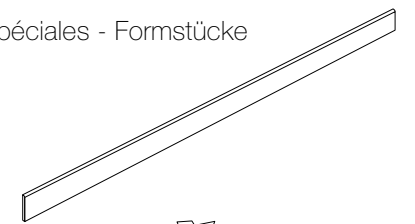
WHITE	12,04
MOKA	12,04
MULTI	12,04

Pezzi speciali - Trims - Pièces spéciales - Formstücke



BATTISCOPA
7,5x61,5 . 3"x24"

WHITE	6,48
MOKA	6,48
MULTI	6,48



BATTISCOPA
6,5x120 . 2"⁹/₁₆"x48"

WHITE	15,43
MOKA	15,43
MULTI	15,43